

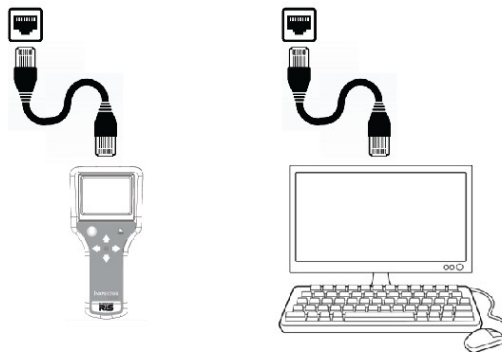


701 Decatur Avenue North, Suite 107 • Minneapolis, MN 55427 • +1-763-746-8034 • www.rjs1.com

## Inspector 5000 Upgrade Instructions

**NOTE: Critical! If you unit is 1.109 or earlier you must download and install 1.110 FIRST before upgrading to the latest firmware. 1.110 can be downloaded here: [Link](#)**

1. Download the latest firmware from link at [www.RJS1.com](http://www.RJS1.com)
2. Unzip to your Desktop the firmware file (upgrade file is a BIN type file, file name will be x.xxx.BIN (x.xxx is firmware version) – if you need instructions on Unzipping files please visit Microsoft's website: <https://support.microsoft.com/en-us/help/4028088/windows-zip-and-unzip-files>
3. Power OFF the Inspector 5000 unit
4. Connect an Ethernet cable to your office network (*Ethernet cable not included*)



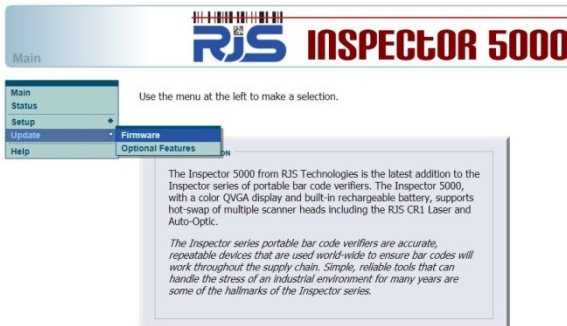
*Both your computer and the I-5000 must be connected to your office network*

5. Turn ON the Inspector 5000 unit
6. After startup, press the <Power> button on the Inspector 5000
7. Press and hold the <Print> button and then press the <Power> button to open the System Status page which has the first line of "IP ADDR". The number most likely starts with 192.168.... (this depends on how your DHCP router is configured). Write down this number.  
**Note: Occasionally it takes a minute for the IP address to refresh. Exiting the Status screen (by pressing the <Power> button) and the re-entering the Status screen may be necessary**
8. Go to your computer and open a web browser and in the address bar enter the IP address from the Inspector 5000 unit.
9. The Inspector 5000 web server will load the following page:

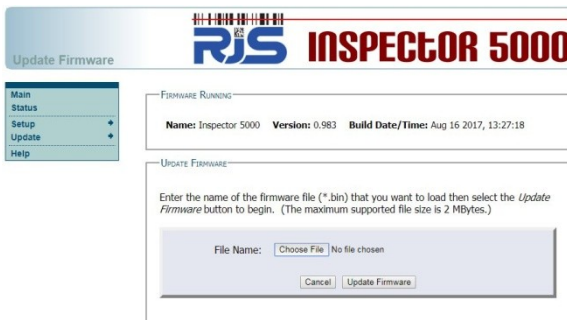


10. Click the “Continue” button

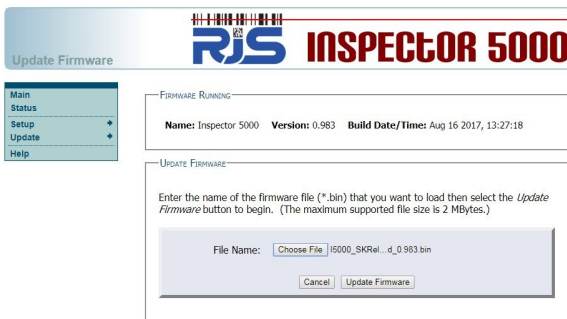
11. When prompted for a user name and password, use “admin” for the user name and “admin” for the password



12. Click “Update” and then “Firmware”



13. Select the new .BIN firmware file



14. Click the “Update Firmware” button

15. Wait for the firmware to be loaded and the complete message to be displayed

16. Power OFF the Inspector 5000 unit

17. Disconnect Ethernet cable

18. Turn ON the Inspector 5000 unit
19. Configure any Setup parameters as necessary