

RJS USB TO SERIAL (RS-232) ADAPTER SETUP

Applies to Part Number 002-6514

NOTE: Do NOT plug in the USB-To-Serial adapter until AFTER the software is installed!

Step 1 – Download the software from http://www.rjs1.com/Downloads/USB_To_Serial.zip

Step 2 – Extract the **USB_To_Serial.zip** file

Step 3 – Open the folder where the files were extracted and launch the appropriate application:

For Windows 10, Windows 7, or Vista - Double Click on the **PL2303_Prolific_Vista_332102.exe**

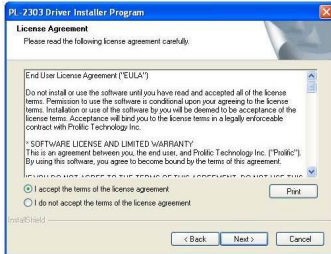
For Windows 8 or if error code 10 - Extract and open the **Profilic_Win8_x64_x86** folder, then right click on the **ser2pl.inf** file (the correct file will be listed **Setup Information** under the type column)

For XP or Windows 2K - Double Click on the **PL2303-Driver_XP2K_v204102.exe**

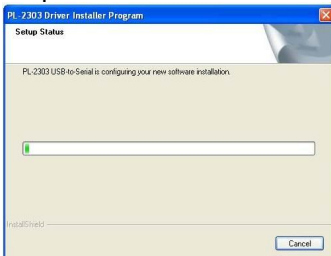
Step 4 – Click the **Next** button



Step 5 – Accept the license agreement and click the **Next** button



Step 6 – The drivers will now be installed



Step 7 – Click the **Finish** button



Step 8 – Plug in the USB to Serial adapter, the toolbar should display the new hardware found



Step 9 – Plug in the USB to Serial adapter, the toolbar should display the new hardware found



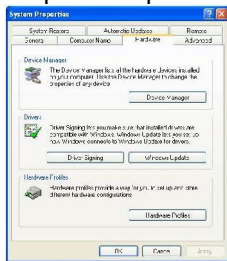
Step 10 – Plug in the USB to Serial adapter, the toolbar should display the new hardware found



Step 11 – Check the installation by launching the **Control Panel**

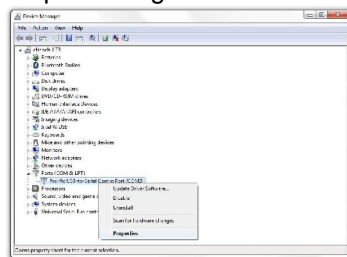


Step 12 – Open the **System** program and click **Device Manager**



Step 13 – Expand the **Ports (COM & LPT)** option and look for **Prolific USB-to-Serial Comm Port**, note the active Com port number

Step 14 – Right click on **Prolific USB-to-Serial Comm Port** and select **Properties**

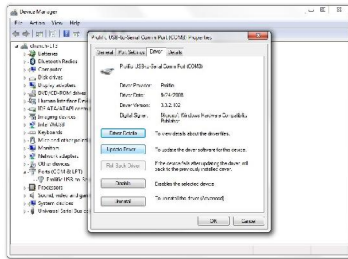


Note: In some cases Windows decides to automatically install the wrong driver, Step 15 is to confirm the correct driver is installed and being used

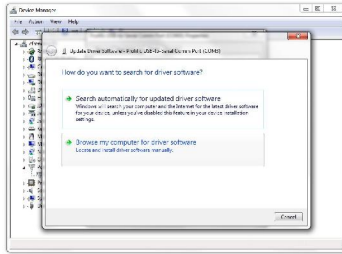
Step 15 – Select the **Drivers** tab and confirm that the date of the driver is **9/24/2008**

If the date is 9/24/2008 then the installation is COMPLETE!

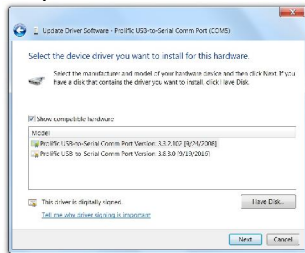
If the date is AFTER 9/24/2008 then click “Update Driver” and continue with steps 16-18



Step 16 – Select **Browse my computer for driver software**



Step 17 – Select **Prolific USB-to-Comm Port Version 3.3.2.102 [9/24/2008]** and click **Next**



Step 18 – Following installation of the correct driver you can close the windows and restart the VCIR software program