



701 Decatur Avenue North, Suite 107 • Minneapolis, MN 55427 • +1-763-746-8034 • www.rjs1.com

## RJS USB TO SERIAL (RS-232) ADAPTER SETUP

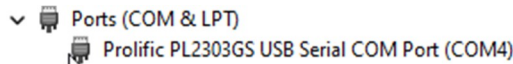
### Applies to Part Number 002-6514

**Note:** *USB to Serial adapter cables manufactured in the past few years should be recognized by Windows Update and should install automatically in Windows 10 and 11.*

Step 1 – Insert the Blue and Silver USB to Serial adapter cable into an empty USB Port on your PC.

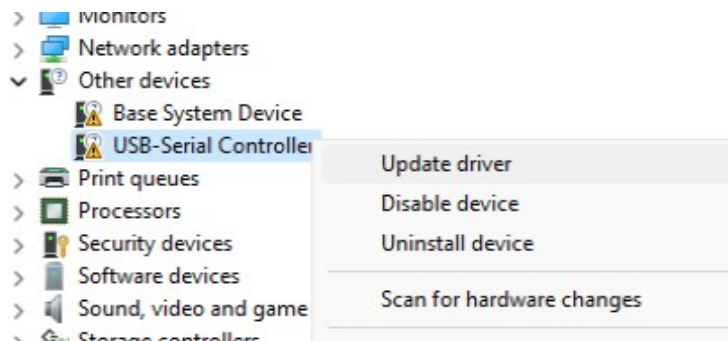
Step 2 – You will need to have administration privileges on your PC. Open the Device manager on your PC by clicking the Windows Start Button and searching for **Device Manager** and pressing enter.

Find the Prolific USB to serial device in the **Ports (COM & LPT)** section. If the driver was found automatically, you should see the following:



**Note:** *Write down the COM Port number - in the image above the port number is COM4*

Step 3 - If the driver is not yet found you should see **USB-Serial Controller** under **Other Devices** as shown below:



Step 4 - Right-Click the **USB-Serial Controller** and select **Update Driver** and select **Search Automatically for drivers**

*If a driver is not found, select the second menu **Search for Updated drivers on Windows Update***

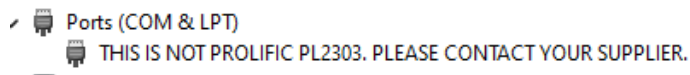
**Note:** *To install the newer driver without running Windows Update you can download the driver from: [https://www.rjs1.com/Downloads/USB\\_Serial\\_Driver.zip](https://www.rjs1.com/Downloads/USB_Serial_Driver.zip)*

Windows should now show a **Prolific** device under **Ports (COM and LPT)** you should see the following:



**Note:** *Write down the COM Port number - in the image above the port number is COM4*

If the device manager shows a message similar to the following:



This message indicates that the USB to Serial cable is the previous version using an older chipset. **You will need to install an older driver.**

## To install the older driver that is compatible with the older cable

Step 5 – Remove the USB to Serial cable from the USB port

Step 6 – Download the software from [http://www.rjs1.com/Downloads/USB\\_To\\_Serial.zip](http://www.rjs1.com/Downloads/USB_To_Serial.zip)

Step 7 – Extract the **USB\_To\_Serial.zip** file

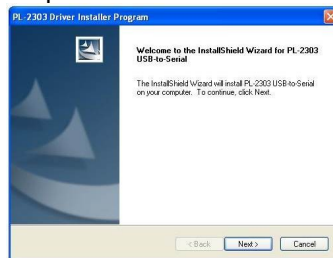
Step 8 – Open the folder where the files were extracted and launch the appropriate application:

For Windows 11, 10, 7, or Vista - Double Click on the **PL2303\_Prolific\_Vista\_332102.exe**

For Windows 8 or if error code 10 - Extract and open the **Profilic\_Win8\_x64\_x86** folder, then right click on the **ser2pl.inf** file (the correct file will be listed **Setup Information** under the type column)

For XP or Windows 2K - Double Click on the **PL2303-Driver\_XP2K\_v204102.exe**

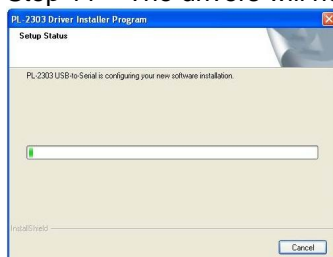
Step 9 – Click the **Next** button



Step 10 – Accept the license agreement and click the **Next** button



Step 11 – The drivers will now be installed



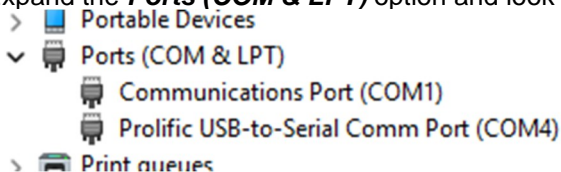
Step 12 – Click the **Finish** button



Step 13 – Plug in the USB to Serial adapter, the toolbar should display the new hardware found

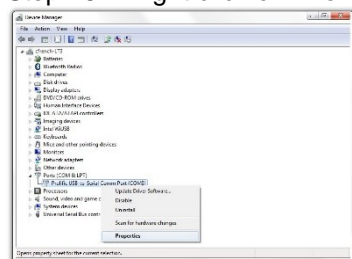
Step 14 – Open the Device manager on your PC by clicking the Windows Start Button and searching for **Device Manager** and pressing enter

Step 15 – Expand the **Ports (COM & LPT)** option and look for **Prolific USB-to-Serial Comm Port**



**Note: Write down the COM Port number - in the image above the port number is COM4**

Step 16 – Right click on **Prolific USB-to-Serial Comm Port** and select **Properties**

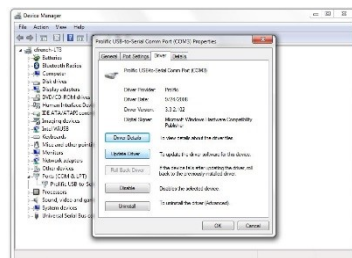


**Note: In some cases, Windows decides to automatically install a newer incorrect driver. Step 16 is to confirm the correct driver is installed and being used**

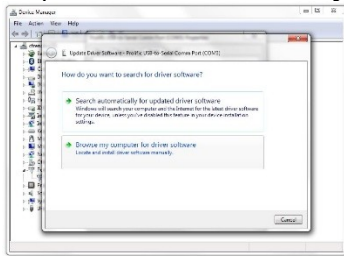
Step 17 – Select the **Drivers** tab and confirm that the date of the driver is **9/24/2008**

If the date is **9/24/2008** then the installation is COMPLETE!

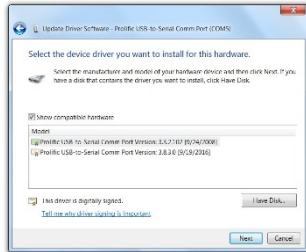
If the date is **AFTER 9/24/2008** then click “Update Driver” and continue with steps 18-20



Step 18 – Select **Browse my computer for driver software**



Step 19 – Select **Prolific USB-to-Comm Port Version 3.3.2.102 [9/24/2008]** and click **Next**



Step 20 – Following installation of the correct driver you can close the windows and restart the VCIR software program

The installation is COMPLETE!